

WHY CIFA



Truck Mixer Pumps



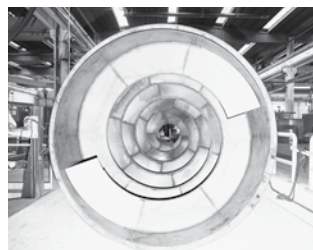
WHY
CIFA



WE INVENTED AND REINVENTED THE TRUCK MIXER PUMP

It was 1974 when Cifa became the first company to produce the Truck Mixer Pumps.

Thanks to the design and to the technology of the product, today we proudly say that we have been able to produce and sell more than 6.000 truck mixer pumps, transporting and pumping millions of concrete cubic meters all over the world. But we aren't stopping here: we have designed and brought the carbon fiber technology to the boom structure: we reinvented the truck mixer pump once again.



PAINTING



Customized painting on demand

MADE IN ITALY



CIFA truck mixers are 100% made in Italy.
All the components of the CIFA truck mixers are Italian or German brand

MOUNTED ON ALL TRUCK BRANDS



CIFA truck mixer pumps can be mounted on all truck brands. According to CIFA truck specifications documentation

LEASING



Available in Italy, Russia, China, South Africa, Australia, USA

SERVICES



Training for operators



PLACING BOOMS

Available lengths to reach many distances: 24, 25, 28 and 32 meters.



STABILIZATIONS

Single or double telescopic system on front outriggers together with fixed system on rear outriggers in order to guarantee a safe stabilization in a small area.



PUMPING UNITS

Two open loop types and one closed loop type according to the desired way of pumping.



DRUMS

Two types of drums are available according to client's needs: 7 and 9 m³.



CONTROL SYSTEMS

All controls are designed and positioned to make the job easier and to speed up all the operations.

MAGNUM. ALL IN ONE.

STEELTECH TRUCK MIXER PUMPS

Originally designed in 1974 and lately improved in 1987, the Steeltech "Magnum" is the iconic CIFA truck mixer pump with a boom made entirely of high resistance steel. It combines the advantages of a concrete mixer with those of a pump for casting small quantities of concrete, and as such is capable of both transporting concrete and laying it at the jobsite.

CARBOTECH TRUCK MIXER PUMPS

The Carbotech "Magnum" is a variant of the standard line that features a boom partly made in carbon fiber. With its significantly reduced weight and upgraded control systems, the Carbotech kit can be mounted on lighter and shorter chassis able to meet the weight limits mandated by current regulations in the various countries.



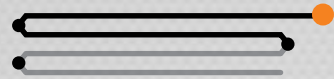


CARBOTECH PLACING BOOM

LIGHTNESS, LENGTH AND STRENGTH BEYOND ANY LIMIT:

Lighter and, so, longer; but at the same time stronger and more resistant. CIFA Carbotech booms allow to obtain unparalleled results, overcoming inviolable limits, in terms of heights and lengths. All Carbotech booms are tested against fatigue at the TEC testing center, allowing us to certify the life of these components with a 5 years warranty.

Z Type



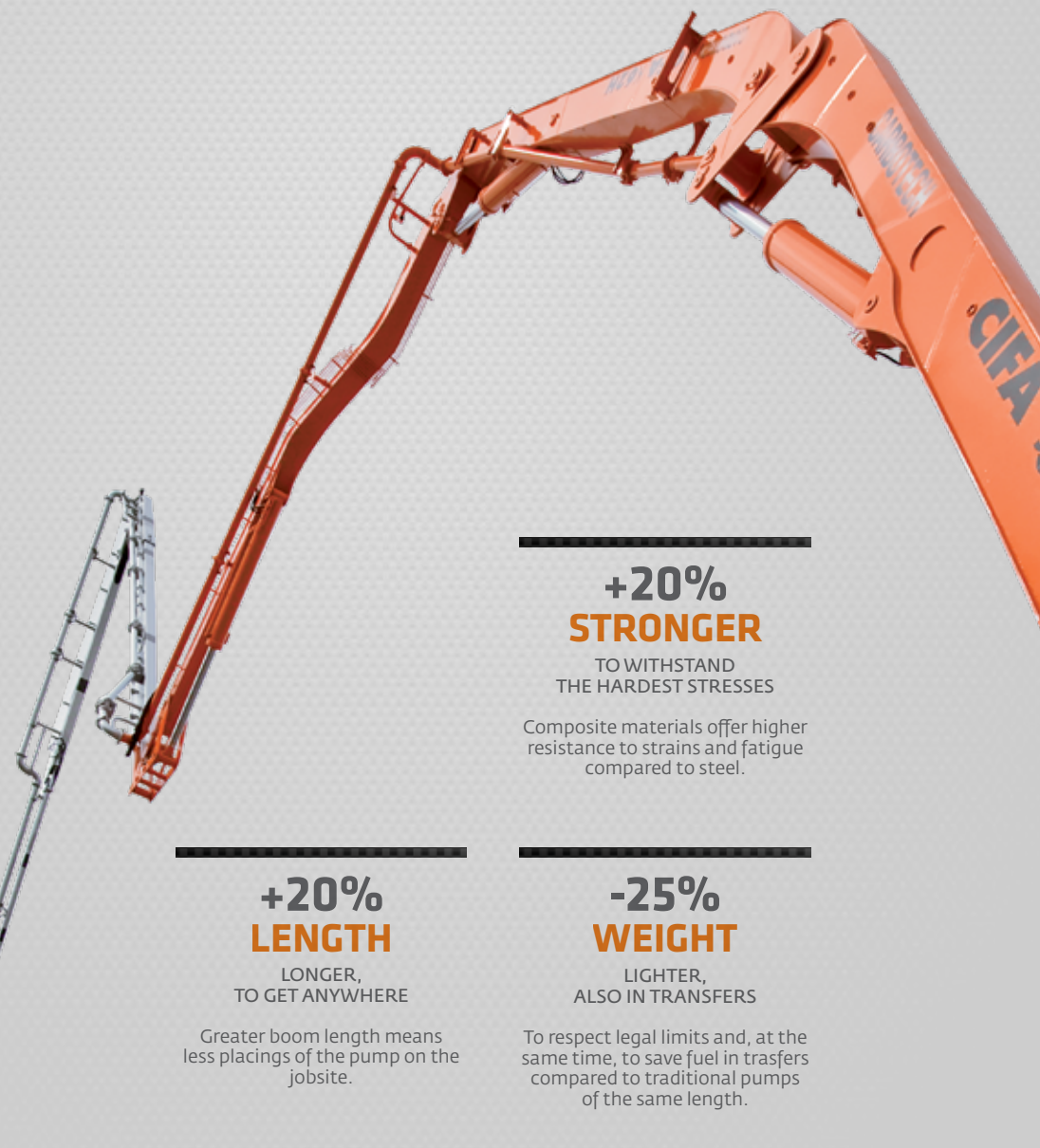
Quick opening operations for concrete pouring near and far from the truck pump.

Available for:

MK25H - MK28H



Carbotech Videos:



**+20%
STRONGER**

TO WITHSTAND
THE HARDEST STRESSES

Composite materials offer higher resistance to strains and fatigue compared to steel.

**+20%
LENGTH**

LONGER,
TO GET ANYWHERE

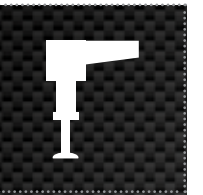
Greater boom length means less placings of the pump on the jobsite.

**-25%
WEIGHT**

LIGHTER,
ALSO IN TRANSFERS

To respect legal limits and, at the same time, to save fuel in transfers compared to traditional pumps of the same length.

CARBOTECH STABILIZATION SYSTEMS



OUTRIGGERS:

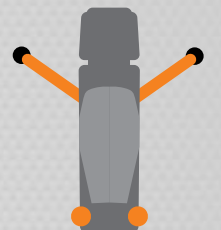
All the outriggers of Carbotech machines are designed to stabilize the machine in the right way in extraordinary tight spaces, which is achievable thanks to the reduced weight of the last 2 sections of their placing boom.

This allows the Carbotech machines to reduce their total footprint while maintaining the same performance.

Front: **Single telescopic X style**
Rear: **Fixed**

Available for:

MK25H - MK28H



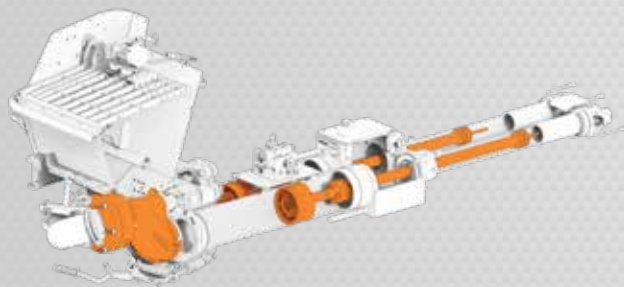


CARBOTECH PUMPING UNIT

DATASHEET

TRUCK MIXERS PUMPS

CARBOTECH



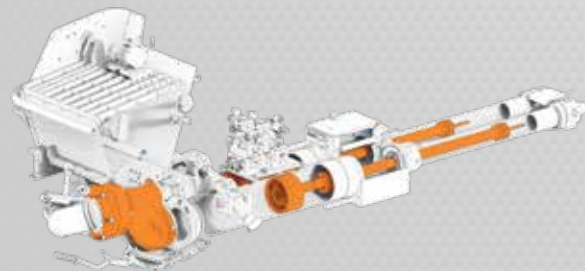
PB607 EPC
Closed Loop type



"S" VALVE:
The structure is made with varying thickness to achieve maximum resistance to wear even when using difficult types of concrete.



WEAR RING AND WEAR PLATE:
The ring and the plate are made of special anti wear material against abrasion and stress due to the concrete flow.



PB607
Open Loop type

Equipped with the 7" S-valve, completely removable, the pumping unit ensures gentle, continuous, and regular flow. This technology guarantees an extremely efficient system for pumping different types of concrete, with aggregates of all sizes, reducing the number of cycles per minute while maintaining the same flow rate, thus ensuring less wear and longer life.

Carbotech truck mixer pumps drums have a capacity of 7m³, and their default machine control system is SMARTRONIC.



MK 25H (4 SECTIONS)
AXLES 3-4 - 80

MK 25H	DRUM		PUMPING UNIT		PLACING BOOM	
		80		PB 607 EPC 61	PB 607 S7 61	
NOMINAL CAPACITY	m ³	7	MAX THEORETICAL OUTPUT	m ³ /h	61	PIPELINE DIAMETER
DRUM GEOMETRIC VOLUME	m ³	12,8	MAX PRESSURE ON CONCRETE	bar	71	MAX VERTICAL REACH
FILLING RATIO	%	55	MAX CYCLES PER MIN.	n	32	MAX HORIZONTAL DISTANCE
MAXIMUM DRUM SPEED	r.p.m.	14	CONCRETE CYLINDERS DIAM.	mm	200	SECTIONS
WATER TANK CAPACITY	l	600	STROKE LENGTH	mm	1000	
			CONCRETE HOPPER CAPACITY	l	400	



MK28H (4 SECTIONS)
AXLES 3-4 - 80

MK 28H	DRUM		PUMPING UNIT		PLACING BOOM	
		80		PB 607 EPC 61	PB 607 S7 61	
NOMINAL CAPACITY	m ³	7	MAX THEORETICAL OUTPUT	m ³ /h	61	PIPELINE DIAMETER
DRUM GEOMETRIC VOLUME	m ³	12,8	MAX PRESSURE ON CONCRETE	bar	71	MAX VERTICAL REACH
FILLING RATIO	%	55	MAX CYCLES PER MIN.	n	32	MAX HORIZONTAL DISTANCE
MAXIMUM DRUM SPEED	r.p.m.	14	CONCRETE CYLINDERS DIAM.	mm	200	SECTIONS
WATER TANK CAPACITY	l	600	STROKE LENGTH	mm	1000	
			CONCRETE HOPPER CAPACITY	l	400	

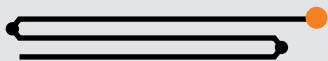


STEELTECH PLACING BOOM

VERSATILITY AND FLEXIBILITY:
The different configurations of the booms on CIFA truck mixer pumps ensure the greatest operative versatility and enable reaching almost any part of the construction yard, even those accessible with the most difficulty. Complete working flexibility, together with great working speeds, allows the complete extension of the boom and its perfect positioning in few minutes. Additionally, these truck mixer pumps feature drums with a capacity ranging from 7 to 9 cubic meters for efficient concrete transportation. Moreover, they offer customizable pumping units, with both open and closed loop types, catering to diverse construction needs.

STRENGTH AND RELIABILITY:
The booms mounted on CIFA truck mixer pumps combine both strength and reliability. Each section of boom has been designed for maximum structural efficiency and fatigue strength. These advanced booms reduce to a minimum the areas subjected to stress intensification when in operation.

Z Type



Quick opening operations for concrete pouring near and far from the truck mixer pump.

Available for:
MK24L



Z Type

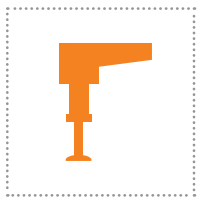


Quick opening operations for concrete pouring near and far from the truck mixer pump.

Available for:
MK28L - MK28L-5 - MK32L



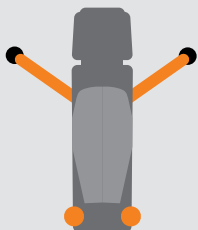
STEELTECH STABILIZATION SYSTEMS



OUTRIGGERS:
All outriggers of Steeltech machines ensure perfect stability and allow maximum accessibility.

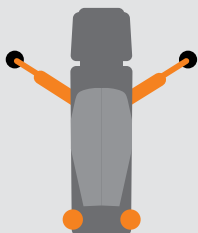
Front: **Single telescopic X style**
Rear: **Fixed**

Available for:
MK24L



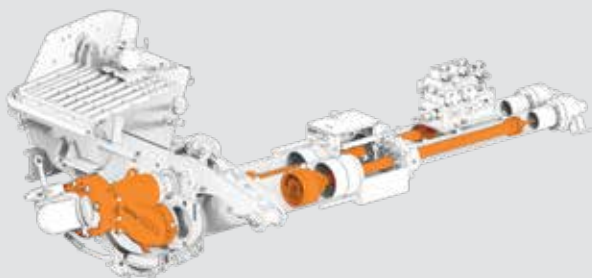
Front: **Double telescopic X style**
Rear: **Fixed**

Available for:
MK28L - MK28L-5 - MK32L

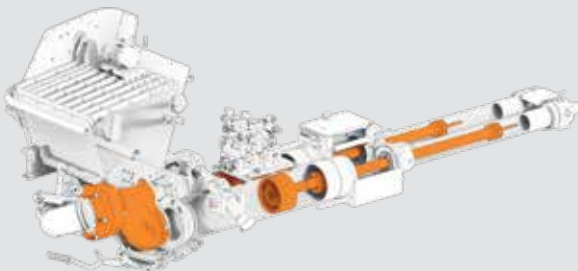




STEELTECH PUMPING UNIT



PB8o8
Open Loop type



PB6o7
Open Loop type



"S" VALVE:
The structure is made with varying thickness to achieve maximum resistance to wear even when using difficult types of concrete.



WEAR RING AND WEAR PLATE:
The ring and the plate are made of special anti wear material against abrasion and stress due to the concrete flow.

Equipped with the 7" S-valve, completely removable, the pumping unit ensures gentle, continuous, and regular flow. This technology guarantees an extremely efficient system for pumping different types of concrete, with aggregates of all sizes, reducing the number of cycles per minute while maintaining the same flow rate, thus ensuring less wear and longer life.

Additionally, for MK28L and MK28L-5 models it's possible to choose drums with capacities of 7m³ or 9m³. The machine control system included with Steeltech pumping units is EASYTRONIC, except for the PB6o7 EPC pumping unit which features the SMARTRONIC system.

DATASHEET TRUCK MIXERS PUMPS STEELTECH



MK 24L (3 SECTIONS)

AXLES 3-4 / 80

MK 24L		DRUM		PUMPING UNIT			PLACING BOOM	
		8o			PB 6o7 S7			
NOMINAL CAPACITY	m³	7	MAX THEORETICAL OUTPUT	m³/h	61	PIPELINE DIAMETER	mm	100
DRUM GEOMETRIC VOLUME	m³	12,8	MAX PRESSURE ON CONCRETE	bar	71	MAX VERTICAL REACH	m	23,15
FILLING RATIO	%	55	MAX CYCLES PER MIN.	n	32	MAX HORIZONTAL DISTANCE	m	19,15
MAXIMUM DRUM SPEED	r.p.m.	14	CONCRETE CYLINDERS DIAM.	mm	200	SECTIONS	n	3
WATER TANK CAPACITY	l	600	STROKE LENGTH	mm	1000			
			CONCRETE HOPPER CAPACITY	l	400			



MK 28L (4 SECTIONS)

AXLES 4 - 80 / 115

MK 28L		DRUM		PUMPING UNIT				PLACING BOOM	
		80	115			PB 607 S7	PB 808 S7		
NOMINAL CAPACITY	m³	7	9	MAX THEORETICAL OUTPUT	m³/h	61	81	PIPELINE DIAMETER	mm 100
DRUM GEOMETRIC VOLUME	m³	12,8	14,5	MAX PRESSURE ON CONCRETE	bar	71	81	MAX VERTICAL REACH	m 28,1
FILLING RATIO	%	55	69	MAX CYCLES PER MIN.	n	32	43	MAX HORIZONTAL DISTANCE	m 24,1
MAXIMUM DRUM SPEED	r.p.m.	14	14	CONCRETE CYLINDERS DIAM.	mm	200	200	SECTIONS	n 4
WATER TANK CAPACITY	l	600	800	STROKE LENGTH	mm	1000	1000		
				CONCRETE HOPPER CAPACITY	l	400	500		



MK 28L-5" (4 SECTIONS)

AXLES 4 - 80 / 115

MK 28L-5		DRUM		PUMPING UNIT			PLACING BOOM			
		80	115		PB 607 EPC	PB 808 S7				
NOMINAL CAPACITY	m³	7	9	MAX THEORETICAL OUTPUT	m³/h	61	81	PIPELINE DIAMETER	mm	125
DRUM GEOMETRIC VOLUME	m³	12,8	14,5	MAX PRESSURE ON CONCRETE	bar	71	81	MAX VERTICAL REACH	m	28,4
FILLING RATIO	%	55	69	MAX CYCLES PER MIN.	n	32	43	MAX HORIZONTAL DISTANCE	m	24,4
MAXIMUM DRUM SPEED	r.p.m.	14	14	CONCRETE CYLINDERS DIAM.	mm	200	200	SECTIONS	n	4
WATER TANK CAPACITY	l	600	800	STROKE LENGTH	mm	1000	1000			
				CONCRETE HOPPER CAPACITY	l	400	500			



MK 32L (4 SECTIONS)

AXLES 4 - 115

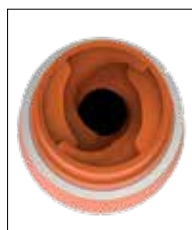
MK 32L		DRUM		PUMPING UNIT			PLACING BOOM	
		115			PB 607 S7	PB 808 S7		
NOMINAL CAPACITY	m³	9	MAX THEORETICAL OUTPUT	m³/h	61	81	PIPELINE DIAMETER	mm 100
DRUM GEOMETRIC VOLUME	m³	14,5	MAX PRESSURE ON CONCRETE	bar	71	81	MAX VERTICAL REACH	m 31,2
FILLING RATIO	%	69	MAX CYCLES PER MIN.	n	32	43	MAX HORIZONTAL DISTANCE	m 27,2
MAXIMUM DRUM SPEED	r.p.m.	14	CONCRETE CYLINDERS DIAM.	mm	200	200	SECTIONS	n 4
WATER TANK CAPACITY	l	800	STROKE LENGTH	mm	1000	1000		
			CONCRETE HOPPER CAPACITY	l	400	500		



COMPONENTS

ANTI WEAR MATERIAL

The drum and blades are made of high resistance antiwear steel with thickness from three (3) millimeters in steel 450HB light version to four (4) millimeters in 30 Mn B5.



STABILITY OF THE MACHINE

The 3 centre of gravities are designed to ensure the maximum stability to the machine. The drum axle is properly sideshifted to ensure an optimal weight balancing of the machine in all directions and in every concrete loading condition.



ELECTRONIC OPERATION CONTROL: ALL FUNCTIONS ALWAYS UNDER CONTROL

The electronic operation control by CSD (Constant Speed Drive) keeps the drum rotation constant by varying the hydraulic motor revolutions.

ROLLERS AND SAFETY LOCK

Magnums with 7 m³ capacity drums are equipped with single roller, while Magnums with 9m³ drums, due to their higher capacity, come with dual rollers. All the drums have a special anti-rotation lock that ensures greater safety for the operator during extraordinary maintenance.



LOADING AND UNLOADING AREA: INCREASED FUNCTIONALITY

The elements of the loading and unloading hopper, made of wear-resistant materials, are designed to obtain optimal geometries for efficiency and functionality, meaning minimum concrete blockage chance.



Everything connected

Cifa Vista is the remote monitoring system available throughout the entire range of machines and plants made by CIFA. This unique system is gathering all the data from the usage of the machine and store them in the cloud keeping them available 7/24 h from everywhere. Not only statistic data on performances but also a direct connection for service from remote and a big help to manage the fleet by tracing the maintenance status of each machine. A big step ahead managing the fleet and an unparalleled document certifying the value of the machine along the years.



This service which uses a control unit that collects machine data and transmits them to the portal created for the purpose via the supplied data only sim card. From the interface, simple and intuitive, it is possible to monitor the position, activities and various operating parameters of the machines belonging to his fleet to ease troubleshooting.

The data available are both realtime data from the machine and those previously stored so that the evolution of multiple parameters, such as daily productivity or fuel consumption, can be compared and kept under control. Each dealer has access to data on its customers' machines so that preventive maintenance can be programmed. Each customer has all the information on their fleet at hand.

The unit is installed in the main electric panel in CIFA factory, features a built-in data sim card and is connected to machine CAN-BUS

VISTA HIGHLIGHTS

AFTER SALES SUPPORT MANAGEMENT



Streamlined data sharing between customers dealers and CIFA.

TROUBLESHOOTING



Get real time and stored diagnostic messages.

PREVENTIVE MAINTENANCE

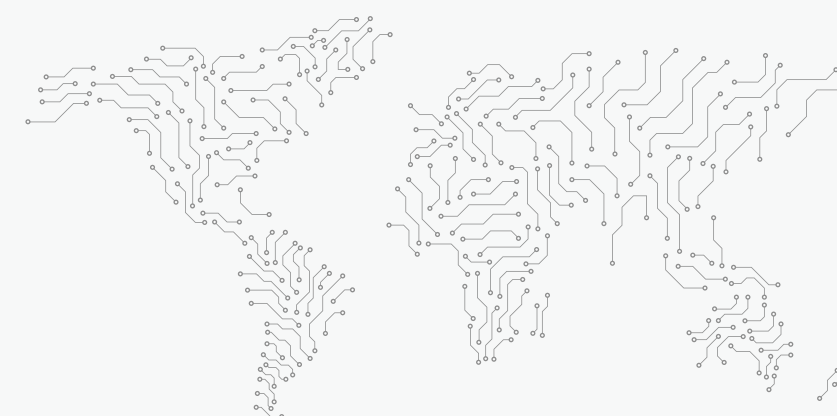


Monitor the usage of machines and schedule maintenance in advance easily.

FLEET MONITORING



Analyze real-time and stored data easily, monitor productivity and costs, anti-theft.



Geolash system with Worldwide data coverage



CONTROL SYSTEMS



BOOM PROPORTIONAL DISTRIBUTOR
Ergonomic hydraulic controls for boom and stabilization system.



REAR CONTROL PANEL
Capsense control panel positioned on the rear side for the drum and pumping unit control, including pressure manometers.



REMOTE CONTROL
Comfortable and lightweight for the boom control and for the management of the main functions of the machine.



CABIN CONTROLS
Capsense electro-hydraulic controls placed in the cabin to adjust all main functions of the truck mixer pump and the motors.



DETACHABLE ELECTRICAL SYSTEM
The electrical system can be detached for easy maintenance.



LSC LIGHT STABILITY CONTROL
(according to EN 12001:2012)



LSC system recognize the outrigger opening configuration and let operate with the machine even with one or more outrigger closed.

STABILITY CONTROL SYSTEM

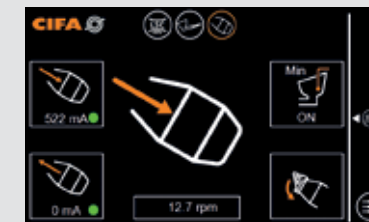
CONTROL SYSTEMS



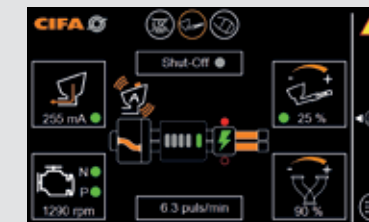
Easytronic

Machine management system for Steeltech series machines with open loop pumping units.

EASYTRONIC is the user-friendly control system made by CIFA to easy manage the truck pump during the operation at the job site. Furthermore, thanks to EASYTRONIC, the operator receives the most important data from the machine, such as:



DRUM DATA
The drum rotation and drum r.p.m.



PUMPING UNIT DATA
The pumping unit and engine r.p.m.



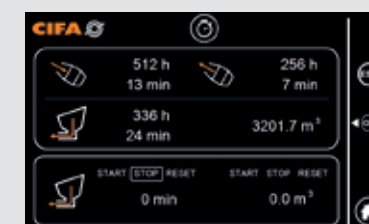
COUNTERS
The system collects and saves the data to know the working hours.

Machine management system for STEELTECH series machines with closed loop pumping units, and all CARBOTECH truck mixer pumps.

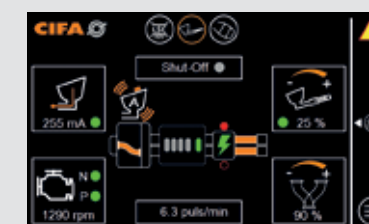
Smartronic®

Smartronic, available with closed loop pumping unit PB 607 EPC, is the most advanced electronic management system for truck mixer pumps in the market. It simplifies operations and collects data to manage all the vehicle functions in the easiest way.

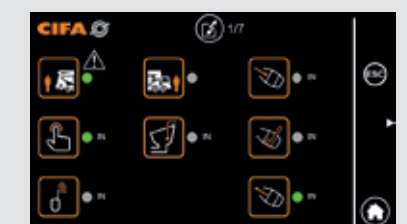
Available in the silver and gold versions, Smartronic can be completed with the advanced package delivering an additional set of features to better monitor and manage the pumping unit, the placing boom and the stabilization of the machine.



COUNTERS
The system collects and saves data to keep track of the work done.



PUMPING UNIT MANAGEMENT AND DRUM
The system shows all the pumping unit and drum data, in order to monitor the main performance.



DIAGNOSTICS
The system provides a detailed analysis of the working phase, detecting clearly errors and failures, reducing in this way potential any machine downtime.

Smartronic Silver is supplied, as standard, in MK25H closed loop pumping unit.
Smartronic Gold is supplied, as standard, in MK28E closed loop pumping unit.



ENERGYA SERIES ELECTRIC TRUCK MIXER PUMPS



SOPHISTICATED BUT EASY TO USE:
The ENERGYA concrete pump has integrated the best of CIFA technology for management of the mixer, pumping unit and boom. The electronic control system, always at hand even in the driving cab, combines the ENERGYA module already present in its sister model, the Eg, and the Smartronic system shared with the other concrete pumps. The latter allows you to precisely manage the closed-circuit pumping unit and, above all, to benefit from the LSC function for control of the stabilization system and work with maximum safety.



Battery management



Smartronic with LSC system



Quick and intuitive control of operations with drum and discharge chute

The system is compatible with both 220 V and 380V outlets. Charging times vary from 8 hours with a standard system and, in case of public recharging columns, the time varies according to the available power.



ENERGYA MK28E

ENERGYA SERIES ELECTRIC TRUCK MIXER PUMPS

BATTERY	
Technology	Lithium-ion
Voltage	288 V
Capacity	36 kWh/125Ah

CHARGING MODE	
Standard charging mode	single phase 220V - 16A
High speed charging mode	400Vac (Three phase) - 35kW

PUMPING UNIT TECHNICAL DATA		
Model		PB607EPC
Max. theoretical output	m³/h	61
Max. pressure on concrete	bar	71
Max. number of cycles per minute	n°	32
Concrete cylinders (diam. x stroke)	mm	200x1000
Concrete hopper capacity	l	400
"S" valve diameter	"	7

CONCRETE MIXER TECHNICAL DATA		
Model		RH 80
Nominal capacity	m³	7
Drum geometric volume	m³	12,8
Filling ratio	%	55
Max. drum speed	r.p.m.	14
Pressurized water tank capacity	l	600
Liter-counter scale	l	0-500



MK 28E (4 SECTIONS)
AXLES 4 - 80

MK 28E		DRUM	PUMPING UNIT		PLACING BOOM	
		80	PB 607 EPC			
NOMINAL CAPACITY	m³	7	MAX THEORETICAL OUTPUT	m³/h	PIPELINE DIAMETER	mm
DRUM GEOMETRIC VOLUME	m³	12,8	MAX PRESSURE ON CONCRETE	bar	MAX VERTICAL REACH	m
FILLING RATIO	%	55	MAX CYCLES PER MIN.	n	MAX HORIZONTAL DISTANCE	m
MAXIMUM DRUM SPEED	r.p.m.	14	CONCRETE CYLINDERS DIAM.	mm	SECTIONS	n
WATER TANK CAPACITY	l	600	STROKE LENGTH	mm		
			CONCRETE HOPPER CAPACITY	l		



MK28H - AUSTRIA



MK28L - GERMANY



MK28H - SWITZERLAND



MK28H - ITALY



MK28L - POLAND



MK28L - GERMANY



MK25H - SPAIN



MK28H - AUSTRIA



MK28H - AUSTRIA

JOBSITES



Distributor



CIFA 
A ZOOMLION COMPANY

CIFA S.p.A.

Via Stati Uniti d'America, 26
20030 Senago (Milano) - Italy
tel. +39.02.990131
fax. +39.02.9981157

sales@cifa.com
www.cifa.com

